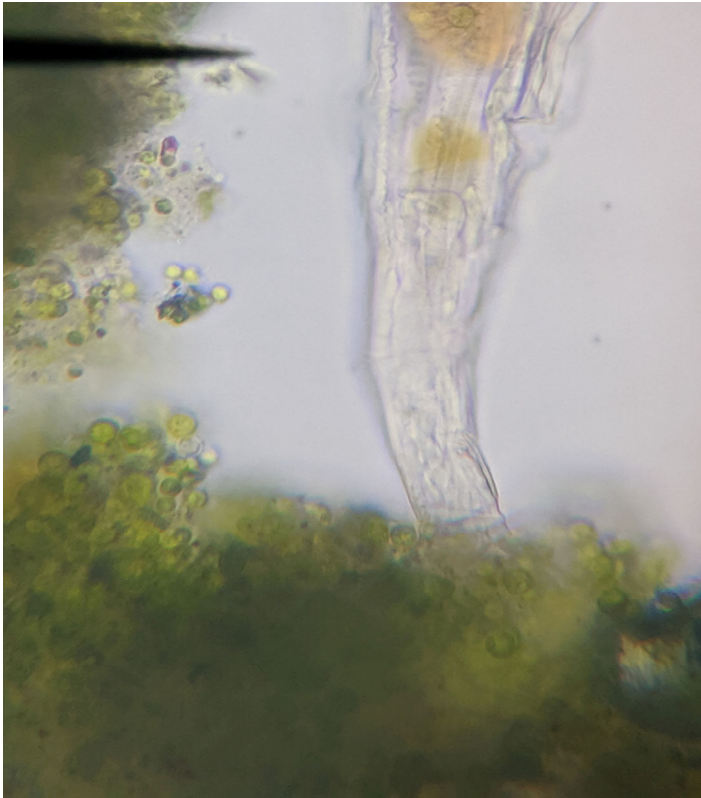


# CW: Pond Identification and Making a Wet Mound Slide

Wednesday, September 18, 2019 10:01 AM

Worked with Student 2



Above Image is from Container D. Image taken by phone so there is no scale bar

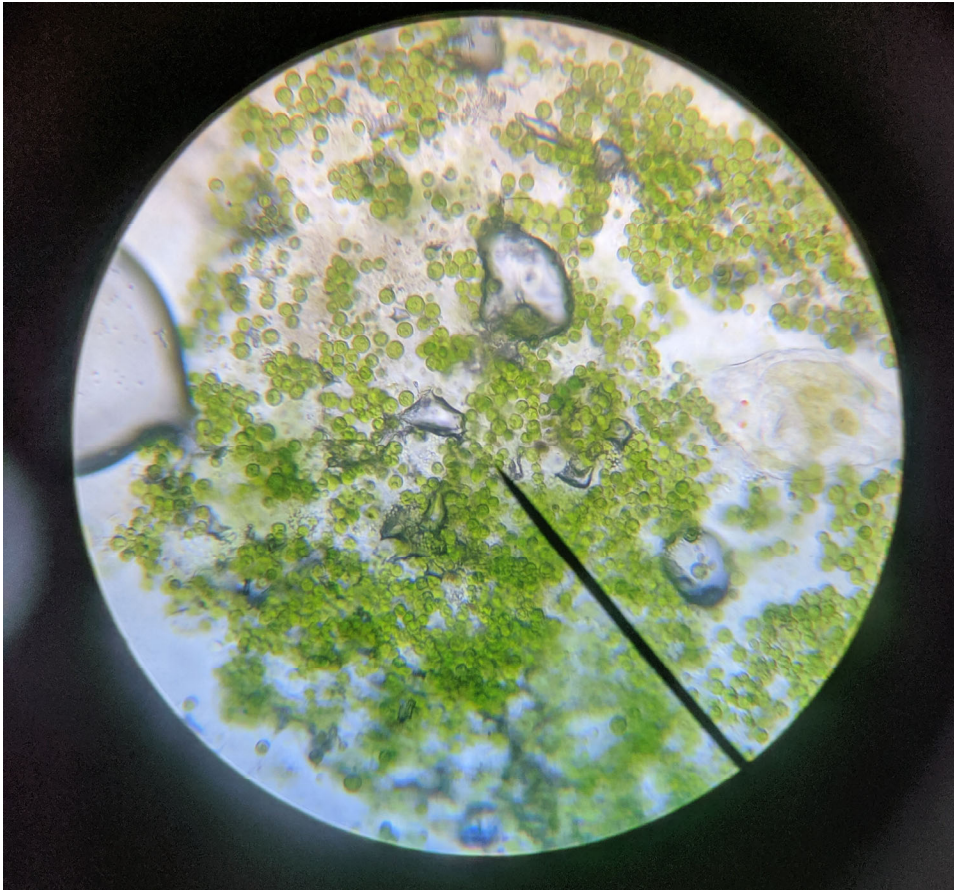
## Observations:

- The long, clear organism is poking into a group of green organisms
- The green organisms are all grouped together in big clumps
- The green organisms have distinct circular shapes that vary in color and size
- The clear organism has two indistinct yellowish blobs in it
- The clear organism has a bottleneck- shaped tube like structure that curves

## Identification :

The clear organism is some kind of worm because it takes in the green and seems to chew it. The green is mostly plants since the worm was eating a lot of it. I am guessing that it is an annelid from the Animalia kingdom. It is much larger than what I assume to be algae, and it moves so much. Most importantly, the worm was visibly eating the green stuff, so I thought it must have been a worm.

The green seems to be from the Plantae kingdom. They are green and don't move. They are eaten by the clear organism.



Above Image is from Container A. Image taken by phone so there's no scale bar

#### Observations:

- There are small clusters of circular green objects of different sizes
- There are clear bubbles in different sizes that are strewn around
- There is a clear organism that has yellowish blobs in the middle
- There are also similar green things that look chewed up inside the clear organism

#### Identification:

The Green: They are most likely to be algae from the Plantae kingdom. They are most likely to be plants because they are tiny and they don't move. Also, there are bits of it inside the clear organism that I assume is some kind of worm

The Clear: I am guessing this is called Euglena, a single celled microbe that eats plants. I identified it by its round body and red eyes. They used to belong in the kingdom Protista, but got moved to Excavata.

Fun Source: <https://biologywise.com/euglena-classification>