

CW: Pond Identification

Friday, September 13, 2019 3:11 PM



Container: D

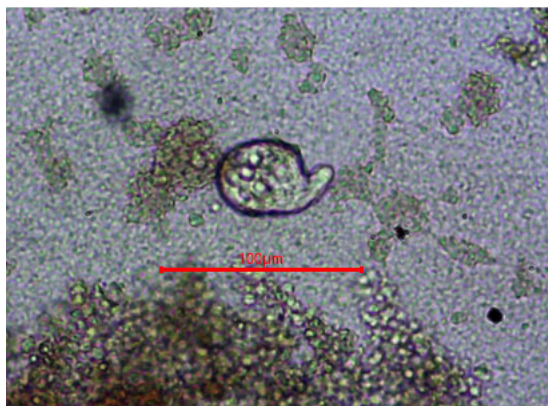
Observations:

The organism clearly responded to its environment because it was able to move about and change paths, possibly because of a search for food. It also had to be composed of more than one cell because it was visible on the lowest power magnification. The other four characteristics of life (growth and development, reproduction, homeostasis, and complex chemistry) were not easily observable.

As for physical observations, the creature was a translucent peachy color. In the middle, there were salmon colored shapes that, presumably, were the organs of the organism. The organism had a tail that was about two-thirds the main body length. The head of the organism was of a trapezoidal shape with two smaller, identical shapes coming out at the front. These two shapes appear similar to the shape of ears or horns in larger animals. In this image, the organism appears to be about 256.3 micrometers long.

Identification: Bdelloidea Rotifer (Philodina), Kingdom Animalia

(Why: After looking at the size range and description of rotifers, I looked up images of them. Images of the Bdelloidea Rotifer were rather close to that of my creature.)



Container: C

Observations:

The organism clearly responded to its environment because of its mobility, which was likely due to a search for food. The organism had to be composed of more than one cell because it was visible on the medium power magnification. The other four characteristics of life (growth and development, reproduction, homeostasis, and complex chemistry) were not easily observable in this organism.

The organism was seemingly translucent and generally appeared to have an elliptical shape with a round

head pulling away from the body. The organism's shape distorted slightly as it moved, perhaps similar to a worm or jellyfish's body during movement. In this particular image, the organism appears to be about 58.8 micrometers long.

Identification: Chlorophyta in Kingdom Plantae

(Why: I chose Chlorophyta because I found images of green algae that looked reminiscent of the picture above. I'm not particular confident in my identification but it was the closest match I could find.)